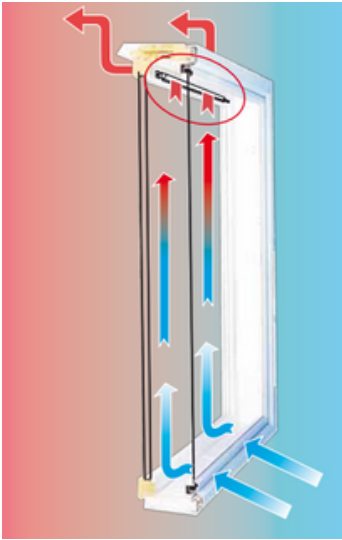
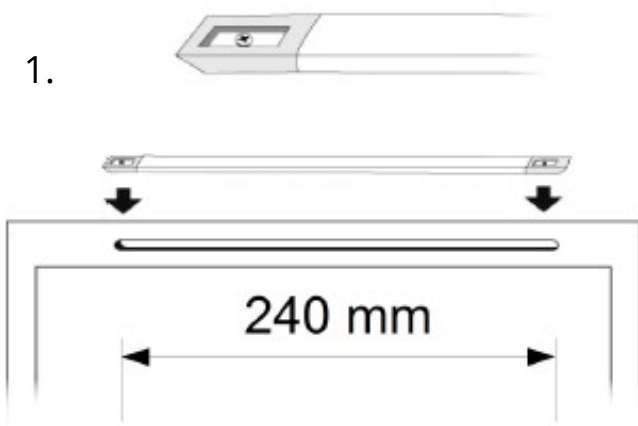


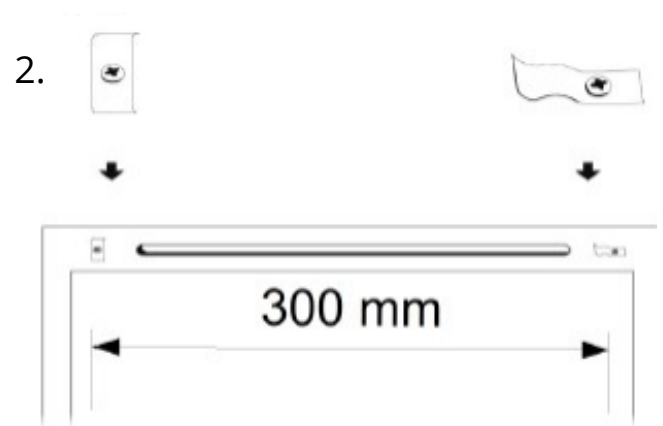
Installation instructions for Sarne Aa-25 trickle vent on a window



In the trickle vent solution, outdoor air flows through the gap between the outer sash and the frame into the space between the sashes, warming slightly before entering the indoor space through a milled opening in the inner sash. The adequacy of the gap between the outer sash and the frame can be easily ensured by partially sealing the sash. This also prevents the sash from rattling. The outermost window is usually sufficiently loose to allow ample air passage through its gaps. If the window is extremely airtight, airflow can be ensured by drilling holes in the outer sash.



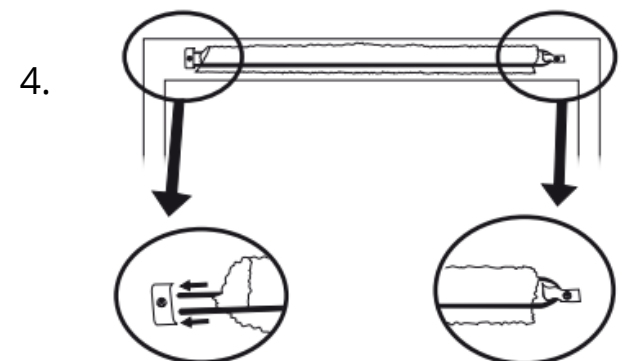
A slot approximately 8-10 mm x 240 mm in size is milled into the inner sash, preferably in the upper part of the sash, allowing the incoming air to be directed upwards. The infinitely adjustable vent is attached with screws over the slot so that the flap opens upwards.



On the other side of the sash, the filter brackets are screwed in place on both sides of the slot, 300 mm apart from each other.



The filter is pulled over the support grid and pressed onto the mesh using a wire clip.



The open end of the arch is first pushed under the bridge-like holder and finally locked in place with the holder at the other end.